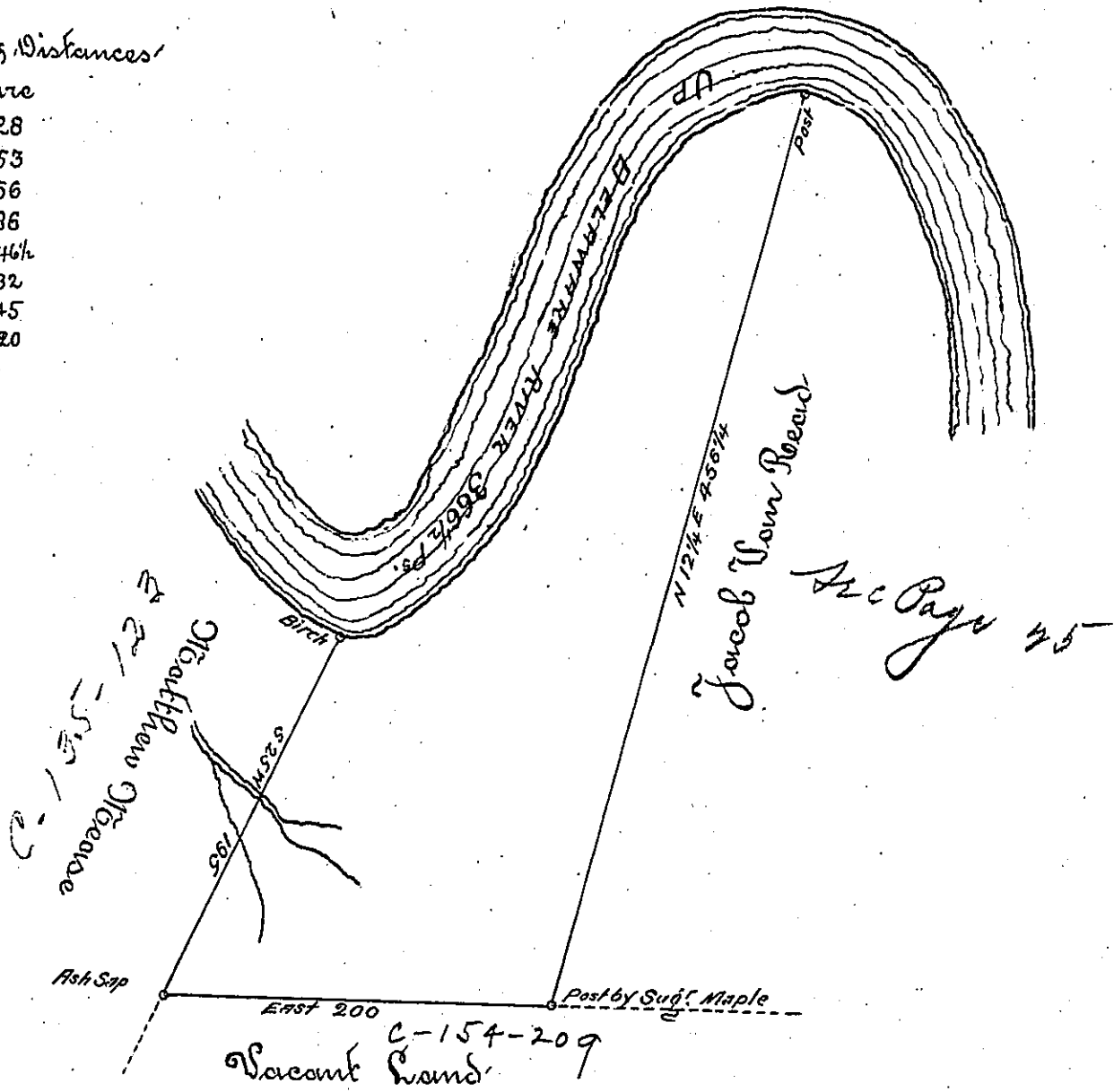


The bearings & Distances
up Delaware are

S 72 W	28
S 53 W	53
S 24 W	56
S 17 W	86
S 29 W	46 1/2
S 40 W	32
S 50 W	45
S 85 W	20



By Virtue of a Warrant Dated the 16th Day of March 1774 Surveyed ye
20th Day of June 1775 to James Nease the above Described Tract of Land situ-
ate on the west side of the River Delaware about Eighteen miles & an half
above Station Rock in Northampton County Containing Three hundred
and eight Acres an half and the Allowance of Six S. Cent & Co.

P. Geo Palmer W.D.

To John Lukens Esq^r }
Surveyor General }

IN TESTIMONY that the above is a copy of the original remaining on file in the
Department of Internal Affairs of Pennsylvania, made con-
formably to an Act of Assembly approved the 16th day of
February, 1833, I have hereunto set my Hand and caused
the Seal of said Department to be affixed at Harrisburg, this

Twenty-sixth day of July 1894

Thos. J. Stewart
Secretary of Internal Affairs.